



CERTIFICATE OF ANALYSIS
REGULATORY COMPLIANCE TESTING

PASS



POTENCY
PASS



TERPENES
TESTED



MOISTURE
PASS



FOREIGN MATTER
PASS



PESTICIDES
PASS

PASS
MYCOTOXINS



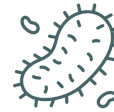
NT
SOLVENTS



PASS
HEAVY METALS



PASS
MICROBIALS



PASS
WATER



CANNABINOID SUMMARY

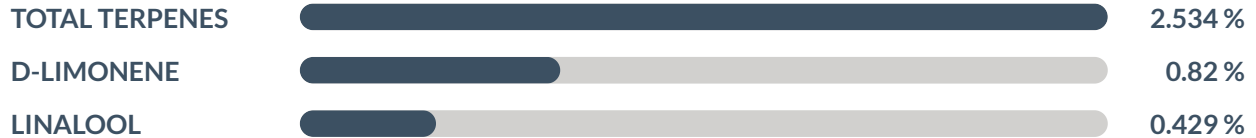
** TOTAL THC = (THCA X 0.877) + THC | TOTAL CBD = (CBDA X 0.877) + CBD

17.87 %
TOTAL THC

0.00 %
TOTAL CBD

2.53 %
TOTAL TERPENES

TERPENOID SUMMARY



SAMPLE INFO

BATCH NO.: 1A4230100003AFD000001070

MATRIX: FLOWER

SUBMATRIX: N/A

CATEGORY: INHALABLE_FLOWER

METRC PKG TAG:

1A4230100003AFD000001068

METRC SRC TAG: 1A4230100003AFD000001070

SAMPLE ID: ACL-241210-001

COLLECTED ON: DEC 10, 2024 16:43:14

RECEIVED ON: DEC 11, 2024 10:21:07

BATCH/SAMPLE SIZE: 5467 G / 12.88 G

RECEIVED BY: MOLLY KATE BOHLKE

CULTIVATOR INFO

LICENSE

CULV004130

MEDICINAL - CULTIVATOR LICENSE

CULTIVATOR

GAUTIER AGRICULTURAL COMPANY

3100 LADNIER RD

GAUTIER, MS 39553

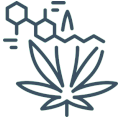
RESULTS CERTIFIED BY: CHASE TRETBAR

LAB DIRECTOR, AARDWOLF-CERTUS LABS

DEC 17, 2024



All analytical procedures and laboratory quality control (LQC) samples required by the Mississippi Department of Health's (MSDH) regulations for cannabis testing facilities were performed and met the acceptance criteria. Notwithstanding this compliance, this information is provided as a service for informational purposes only, and Aardwolf-Certus makes no claims of efficacy or safety of this product. The results provided are applicable only for the sample(s) analyzed in the condition received; and only for compliance with the Mississippi Medical Cannabis Act Miss. Code Ann §41-137-1, et seq.. Measurement uncertainty is available on request. This report should only be reproduced in full. The statements and results provided in this report have not been approved or endorsed by the Food and Drug Administration (FDA). These statements have not been evaluated by the FDA. This product is not intended to diagnose, treat, cure, or prevent any disease.



L-018: CANNABINOIDS BY HPLC | DEC 17, 2024

PASS

ANALYTE	AMT (mg/g)	AMT (%)	LIMIT (%)	LOD/LOQ (mg/g)	ANALYTE	AMT (mg/g)	AMT (%)	LIMIT (%)	LOD/LOQ (mg/g)
CBC	ND	ND		0.300/1.000	CBNA	ND	ND		0.300/1.000
CBCA	1.518	0.1518		0.300/1.000	Δ ⁸ -THC	ND	ND		0.300/1.000
CBD	ND	ND		0.300/1.000	Δ ⁸ -THCA	ND	ND		0.300/1.000
CBDA	ND	ND		0.300/1.000	Δ ⁹ -THC	4.881	0.4881		0.300/1.000
CBDV	ND	ND		0.300/1.000	Δ ⁹ -THCA	198.159	19.8159		0.300/1.000
CBDVA	ND	ND		0.300/1.000	THCV	ND	ND		0.300/1.000
CBG	< LOQ	< LOQ	0.300/1.000	N/A	THCVA	< LOQ	< LOQ	0.300/1.000	N/A
CBGA	2.713	0.2713		0.300/1.000	TOTAL THC**	178.666	17.8666	PASS	30.5 %
CBL	2.228	0.2228		0.300/1.000	TOTAL CBD**	ND	ND	N/A	
CBN	ND	ND		0.300/1.000					

** TOTAL THC = (Δ⁹-THCA X 0.877) + Δ⁹-THC

** TOTAL CBD = (CBDA X 0.877) + CBD

DRY-WEIGHT AMOUNTS SHOWN



L-011: TERPENES BY GC-MS | DEC 17, 2024

TESTED

ANALYTE	AMT (mg/g)	AMT (%)	LIMIT	LOD/LOQ (mg/g)	ANALYTE	AMT (mg/g)	AMT (%)	LIMIT	LOD/LOQ (mg/g)
TOTAL TERPENES	25.34	2.534			CAMPHENE	0.24	0.024		0.015/0.048
(+)-CEDROL	ND	ND		0.015/0.048	CAMPHOR	ND	ND		0.044/0.144
(+)-FENCHOL	1.26	0.126		0.015/0.048	CIS-β-OCIMENE	1.33	0.133		0.010/0.032
(+)-PULEGONE	ND	ND		0.015/0.048	CIS-NEROLIDOL	ND	ND		0.015/0.048
(-)-α-BISABOOL	0.56	0.056		0.015/0.048	D-LIMONENE	8.20	0.820		0.015/0.048
(-)-CARYOPHYLLENE OXIDE	0.11	0.011		0.015/0.048	Δ ³ -CARENE	ND	ND		0.015/0.048
(-)-GUAIAL	0.74	0.074		0.015/0.048	EUCALYPTOL	ND	ND		0.015/0.048
(-)-ISOPULEGOL	ND	ND		0.015/0.048	FENCHONE	< LOQ	< LOQ	0.029/0.096	N/A
α-CEDRENE	ND	ND		0.015/0.048	γ-TERPINENE	ND	ND		0.015/0.048
α-HUMULENE	0.76	0.076		0.015/0.048	γ-TERPINEOL	ND	ND		0.003/0.010
α-PHELLANDRENE	ND	ND		0.015/0.048	GERANIOL	0.27	0.027		0.015/0.048
α-PINENE	1.50	0.150		0.015/0.048	GERANYL ACETATE	0.10	0.010		0.015/0.048
α-TERPINENE	ND	ND		0.015/0.048	ISOBORNEOL	< LOQ	< LOQ	0.015/0.048	N/A
α-TERPINEOL	0.91	0.091		0.009/0.031	LINALOOL	4.29	0.429		0.015/0.048
α-TERPINOLENE	0.11	0.011		0.015/0.048	NEROL	ND	ND		0.015/0.048
β-CARYOPHYLLENE	2.99	0.299		0.015/0.048	SABINENE	ND	ND		0.015/0.048
β-MYRCENE	0.49	0.049		0.015/0.048	TRANS-β-OCIMENE	0.04	0.004		0.005/0.016
β-PINENE	1.17	0.117		0.015/0.048	TRANS-NEROLIDOL	ND	ND		0.015/0.048
BORNEOL	0.27	0.027		0.029/0.096	VALENCENE	ND	ND		0.015/0.048



L-017: WATER ACTIVITY BY AW PROBE | DEC 11, 2024

PASS

ANALYTE	AMT (Aw)	LIMIT (Aw)	PASS/FAIL
WATER ACTIVITY	0.533	0.65 Aw	PASS

RESULTS CERTIFIED BY: CHASE TRETBAR

LAB DIRECTOR, AARDWOLF-CERTUS LABS

DEC 17, 2024

Chase Tretbar



All analytical procedures and laboratory quality control (LQC) samples required by the Mississippi Department of Health's (MSDH) regulations for cannabis testing facilities were performed and met the acceptance criteria. Notwithstanding this compliance, this information is provided as a service for informational purposes only, and Aardwolf-Certus makes no claims of efficacy or safety of this product. The results provided are applicable only for the sample(s) analyzed in the condition received; and only for compliance with the Mississippi Medical Cannabis Act Miss. Code Ann §41-137-1, et seq.. Measurement uncertainty is available on request. This report should only be reproduced in full. The statements and results provided in this report have not been approved or endorsed by the Food and Drug Administration (FDA). These statements have not been evaluated by the FDA. This product is not intended to diagnose, treat, cure, or prevent any disease.



L-013: HEAVY METALS BY ICP-MS | DEC 12, 2024

PASS

ANALYTE	AMT (µg/g)	LIMIT (µg/g)	LOD/LOQ (µg/g)	PASS/FAIL	ANALYTE	AMT (µg/g)	LIMIT (µg/g)	LOD/LOQ (µg/g)	PASS/FAIL
ARSENIC	ND	0.4 µg/g	0.019/0.063	PASS	LEAD	< LOQ	1 µg/g	0.019/0.063	PASS
CADMIUM	ND	0.4 µg/g	0.019/0.063	PASS	MERCURY	ND	0.2 µg/g	0.019/0.063	PASS
CHROMIUM	ND	1.2 µg/g	0.076/0.250	PASS	NICKEL	< LOQ	1 µg/g	0.076/0.250	PASS
COPPER	7.246		0.152/0.500	N/A					

RESULTS CERTIFIED BY: CHASE TRETBAR
 LAB DIRECTOR, AARDWOLF-CERTUS LABS
 DEC 17, 2024



All analytical procedures and laboratory quality control (LQC) samples required by the Mississippi Department of Health's (MSDH) regulations for cannabis testing facilities were performed and met the acceptance criteria. Notwithstanding this compliance, this information is provided as a service for informational purposes only, and Aardwolf-Certus makes no claims of efficacy or safety of this product. The results provided are applicable only for the sample(s) analyzed in the condition received; and only for compliance with the Mississippi Medical Cannabis Act Miss. Code Ann §41-137-1, et seq.. Measurement uncertainty is available on request. This report should only be reproduced in full. The statements and results provided in this report have not been approved or endorsed by the Food and Drug Administration (FDA). These statements have not been evaluated by the FDA. This product is not intended to diagnose, treat, cure, or prevent any disease.



L-015: PESTICIDES BY LC-MS/MS | DEC 17, 2024

PASS

ANALYTE	AMT (µg/g)	LIMIT (µg/g)	LOD/LOQ (µg/g)	PASS/FAIL	ANALYTE	AMT (µg/g)	LIMIT (µg/g)	LOD/LOQ (µg/g)	PASS/FAIL
ABAMECTIN	ND	0.5 µg/g	0.038/0.125	PASS	KRESOXIM-METHYL	ND	0.4 µg/g	0.038/0.125	PASS
ACEPHATE	ND	0.4 µg/g	0.038/0.125	PASS	MALATHION	ND	0.2 µg/g	0.038/0.125	PASS
ACEQUINOCYL	ND	2 µg/g	0.038/0.125	PASS	METALAXYL	ND	0.2 µg/g	0.038/0.125	PASS
ACETAMIPRID	ND	0.2 µg/g	0.038/0.125	PASS	METHIOCARB	ND	0.2 µg/g	0.038/0.125	PASS
ALDICARB	ND	0.4 µg/g	0.038/0.125	PASS	METHOMYL	ND	0.4 µg/g	0.038/0.125	PASS
AZOXYSTROBIN	ND	0.2 µg/g	0.038/0.125	PASS	METHYL PARATHION	ND	0.2 µg/g	0.038/0.125	PASS
BIFENAZATE	ND	0.2 µg/g	0.038/0.125	PASS	MYCLOBUTANIL	ND	0.2 µg/g	0.038/0.125	PASS
BIFENTHRIN	ND	0.2 µg/g	0.038/0.125	PASS	NALED	ND	0.5 µg/g	0.038/0.125	PASS
BOSCALID	ND	0.4 µg/g	0.038/0.125	PASS	OXAMYL	ND	1 µg/g	0.038/0.125	PASS
CARBARYL	ND	0.2 µg/g	0.038/0.125	PASS	PACLOBUTRAZOL	ND	0.4 µg/g	0.038/0.125	PASS
CARBOFURAN	ND	0.2 µg/g	0.038/0.125	PASS	PERMETHRIN	ND	0.2 µg/g	0.038/0.125	PASS
CHLORANTRANIL-IPROLE	ND	0.2 µg/g	0.038/0.125	PASS	PHOSMET	ND	0.2 µg/g	0.038/0.125	PASS
CHLORFENAPYR	ND	1 µg/g	0.038/0.125	PASS	PIPERONYLBUTOXIDE	ND	2 µg/g	0.038/0.125	PASS
CHLORMEQUAT CHLORIDE	ND	0.2 µg/g	0.038/0.125	PASS	PRALLETHRIN	ND	0.2 µg/g	0.038/0.125	PASS
CHLORPYRIFOS	ND	0.2 µg/g	0.038/0.125	PASS	PROPICONAZOLE	ND	0.4 µg/g	0.038/0.125	PASS
CLOFENTEZINE	ND	0.2 µg/g	0.038/0.125	PASS	PROPOXUR	ND	0.2 µg/g	0.038/0.125	PASS
CYFLUTHRIN	ND	1 µg/g	0.038/0.125	PASS	PYRETHRINS	ND	1 µg/g		PASS
CYPERMETHRIN	ND	1 µg/g	0.038/0.125	PASS	PYRETHRINS CINERIN I	ND		0.001/0.004	N/A
DAMINOZIDE	ND	1 µg/g	0.019/0.063	PASS	PYRETHRINS JASMOLIN I	ND		0.001/0.004	N/A
DIAZINON	ND	0.2 µg/g	0.038/0.125	PASS	PYRETHRINS PYRETHRIN I	ND		0.021/0.069	N/A
DICHLORVOS	ND	0.1 µg/g	0.038/0.125	PASS	PYRIDABEN	ND	0.2 µg/g	0.038/0.125	PASS
DIMETHOATE	ND	0.2 µg/g	0.038/0.125	PASS	SPINOSAD	ND	0.2 µg/g		PASS
ETHOPROPHOS	ND	0.2 µg/g	0.038/0.125	PASS	SPINOSYN A	ND		0.029/0.095	N/A
ETOFENPROX	ND	0.4 µg/g	0.038/0.125	PASS	SPINOSYN D	ND		0.009/0.030	N/A
ETOXAZOLE	ND	0.2 µg/g	0.038/0.125	PASS	SPIROMESIFEN	ND	0.2 µg/g	0.038/0.125	PASS
FENOXYCARB	ND	0.2 µg/g	0.038/0.125	PASS	SPIROTETRAMAT	ND	0.2 µg/g	0.038/0.125	PASS
FENPYROXIMATE	ND	0.4 µg/g	0.038/0.125	PASS	SPIROXAMINE	ND	0.4 µg/g		PASS
FIPRONIL	ND	0.4 µg/g	0.038/0.125	PASS	SPIROXAMINE A	ND		0.015/0.049	N/A
FLONICAMID	ND	1 µg/g	0.038/0.125	PASS	SPIROXAMINE B	ND		0.024/0.078	N/A
FLUDIOXONIL	ND	0.4 µg/g	0.038/0.125	PASS	TEBUCONAZOLE	ND	0.4 µg/g	0.038/0.125	PASS
HEXYTHIAZOX	ND	1 µg/g	0.038/0.125	PASS	THIACLOPRID	ND	0.2 µg/g	0.038/0.125	PASS
IMAZALIL	ND	0.2 µg/g	0.038/0.125	PASS	THIAMETHOXAM	ND	0.2 µg/g	0.038/0.125	PASS
IMIDACLOPRID	ND	0.4 µg/g	0.038/0.125	PASS	TRIFLOXYSTROB-IN	ND	0.2 µg/g	0.038/0.125	PASS

RESULTS CERTIFIED BY: CHASE TRETBAR
 LAB DIRECTOR, AARDWOLF-CERTUS LABS
 DEC 17, 2024



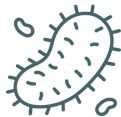
All analytical procedures and laboratory quality control (LQC) samples required by the Mississippi Department of Health's (MSDH) regulations for cannabis testing facilities were performed and met the acceptance criteria. Notwithstanding this compliance, this information is provided as a service for informational purposes only, and Aardwolf-Certus makes no claims of efficacy or safety of this product. The results provided are applicable only for the sample(s) analyzed in the condition received; and only for compliance with the Mississippi Medical Cannabis Act Miss. Code Ann §41-137-1, et seq.. Measurement uncertainty is available on request. This report should only be reproduced in full. The statements and results provided in this report have not been approved or endorsed by the Food and Drug Administration (FDA). These statements have not been evaluated by the FDA. This product is not intended to diagnose, treat, cure, or prevent any disease.



L-015: MYCOTOXINS BY LC-MS/MS | DEC 17, 2024

PASS

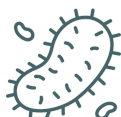
ANALYTE	AMT (µg/kg)	LIMIT (µg/kg)	LOD/LOQ (µg/kg)	PASS/FAIL	ANALYTE	AMT (µg/kg)	LIMIT (µg/kg)	LOD/LOQ (µg/kg)	PASS/FAIL
AFLATOXINS	ND	20 µg/kg		PASS	AFLATOXIN G1	ND		1.515/5.000	N/A
AFLATOXIN B1	ND		1.515/5.000	N/A	AFLATOXIN G2	ND		1.515/5.000	N/A
AFLATOXIN B2	ND		1.515/5.000	N/A	OCHRATOXIN A	ND	20 µg/kg	3.030/10.000	PASS



L-010: TOTAL COLIFORMS BY 3M PETRIFILM | DEC 12, 2024

PASS

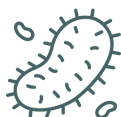
ANALYTE	AMT (CFU/g)	LIMIT (CFU/g)	PASS/FAIL
COLIFORMS	ND	100 CFU/g	PASS



ASP/SAL/STEC BY QPCR | DEC 12, 2024

PASS

ANALYTE	AMT (in one gram)	LIMIT	PASS/FAIL	ANALYTE	AMT (in one gram)	LIMIT	PASS/FAIL
ASPERGILLUS FLAVUS	ND	Any amt in 1 gram	PASS	ASPERGILLUS TERREUS	ND	Any amt in 1 gram	PASS
ASPERGILLUS FUMIGATUS	ND	Any amt in 1 gram	PASS	SALMONELLA SPP.	ND	Any amt in 1 gram	PASS
ASPERGILLUS NIGER	ND	Any amt in 1 gram	PASS	SHIGA TOXIN-PRODUCING E. COLI	ND	Any amt in 1 gram	PASS



L-009: TOTAL YEAST & MOLD BY 3M PETRIFILM | DEC 16, 2024

PASS

ANALYTE	AMT (CFU/g)	LIMIT (CFU/g)	PASS/FAIL
YEAST & MOLD	ND	10000 CFU/g	PASS



L-012: MOISTURE BY THERMOGRAVIMETRIC ANALYSIS | DEC 11, 2024

PASS

ANALYTE	AMT (%)	LIMIT (%)	PASS/FAIL
MOISTURE	11.400	15 %	PASS



L-016: FOREIGN MATERIAL ANALYSIS BY MICROSCOPY | DEC 11, 2024

PASS

ANALYTE	AMT (%)	LIMIT (%)	PASS/FAIL	ANALYTE	AMT (%)	LIMIT (%)	PASS/FAIL
IMBEDDED FOREIGN MATERIAL	ND	25 %	PASS	MOLD	ND	25 %	PASS
INSECT FRAGMENTS, HAIR, MAMMAL EXCREMENT	ND	1 Unit/3g	PASS	SAND, SOIL, CINDERS, DIRT	ND	25 %	PASS

RESULTS CERTIFIED BY: CHASE TRETBAR
 LAB DIRECTOR, AARDWOLF-CERTUS LABS
 DEC 17, 2024



All analytical procedures and laboratory quality control (LQC) samples required by the Mississippi Department of Health's (MSDH) regulations for cannabis testing facilities were performed and met the acceptance criteria. Notwithstanding this compliance, this information is provided as a service for informational purposes only, and Aardwolf-Certus makes no claims of efficacy or safety of this product. The results provided are applicable only for the sample(s) analyzed in the condition received; and only for compliance with the Mississippi Medical Cannabis Act Miss. Code Ann §41-137-1, et seq.. Measurement uncertainty is available on request. This report should only be reproduced in full. The statements and results provided in this report have not been approved or endorsed by the Food and Drug Administration (FDA). These statements have not been evaluated by the FDA. This product is not intended to diagnose, treat, cure, or prevent any disease.

PRODUCT IMAGES



RESULTS CERTIFIED BY: CHASE TRETBAR
LAB DIRECTOR, AARDWOLF-CERTUS LABS
DEC 17, 2024

All analytical procedures and laboratory quality control (LQC) samples required by the Mississippi Department of Health's (MSDH) regulations for cannabis testing facilities were performed and met the acceptance criteria. Notwithstanding this compliance, this information is provided as a service for informational purposes only, and Aardwolf-Certus makes no claims of efficacy or safety of this product. The results provided are applicable only for the sample(s) analyzed in the condition received; and only for compliance with the Mississippi Medical Cannabis Act Miss. Code Ann §41-137-1, et seq.. Measurement uncertainty is available on request. This report should only be reproduced in full. The statements and results provided in this report have not been approved or endorsed by the Food and Drug Administration (FDA). These statements have not been evaluated by the FDA. This product is not intended to diagnose, treat, cure, or prevent any disease.

