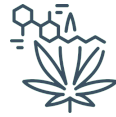




CERTIFICATE OF ANALYSIS  
REGULATORY COMPLIANCE TESTING

**PASS**



POTENCY  
**PASS**



TERPENES  
**TESTED**



MOISTURE  
**PASS**



FOREIGN MATTER  
**PASS**



PESTICIDES  
**PASS**

**PASS**

MYCOTOXINS



**NT**

SOLVENTS



**PASS**

HEAVY METALS



**PASS**

MICROBIALS



**PASS**

WATER



CANNABINOID SUMMARY

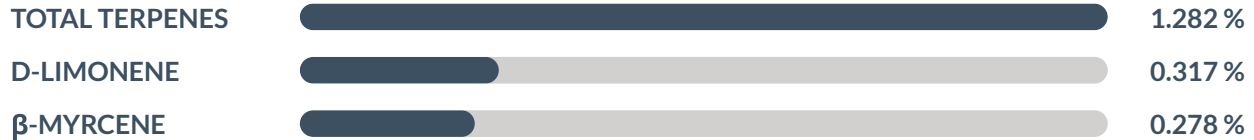
\*\* TOTAL THC = (THCA X 0.877) + THC | TOTAL CBD = (CBDA X 0.877) + CBD

18.20 %  
TOTAL THC

< LOQ %  
TOTAL CBD

1.28 %  
TOTAL TERPENES

TERPENOID SUMMARY



SAMPLE INFO

BATCH NO.: 1A4230100003AFD000001064  
 MATRIX: FLOWER  
 SUBMATRIX: N/A  
 CATEGORY: INHALABLE\_FLOWER  
 METRC PKG TAG:  
 1A4230100003AFD000001059  
 METRC SRC TAG: 1A4230100003AFD000001064  
 SAMPLE ID: ACL-241218-002  
 COLLECTED ON: DEC 18, 2024 16:21:12  
 RECEIVED ON: DEC 19, 2024 08:59:16  
 BATCH/SAMPLE SIZE: 5330 G / 12.52 G  
 RECEIVED BY: LAURA FULKES

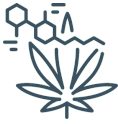
CULTIVATOR INFO

LICENSE  
 CULV004130  
 MEDICINAL - CULTIVATOR LICENSE  
 CULTIVATOR  
 GAUTIER AGRICULTURAL COMPANY  
 3100 LADNIER RD  
 GAUTIER, MS 39553

RESULTS CERTIFIED BY: CHASE TRETBAR  
 LAB DIRECTOR, AARDWOLF-CERTUS LABS  
 JAN 03, 2025



All analytical procedures and laboratory quality control (LQC) samples required by the Mississippi Department of Health's (MSDH) regulations for cannabis testing facilities were performed and met the acceptance criteria. Notwithstanding this compliance, this information is provided as a service for informational purposes only, and Aardwolf-Certus makes no claims of efficacy or safety of this product. The results provided are applicable only for the sample(s) analyzed in the condition received; and only for compliance with the Mississippi Medical Cannabis Act Miss. Code Ann §41-137-1, et seq.. Measurement uncertainty is available on request. This report should only be reproduced in full. The statements and results provided in this report have not been approved or endorsed by the Food and Drug Administration (FDA). These statements have not been evaluated by the FDA. This product is not intended to diagnose, treat, cure, or prevent any disease.



L-018: CANNABINOIDS BY HPLC | DEC 23, 2024

PASS

ANALYTE	AMT (mg/g)	AMT (%)	LIMIT (%)	LOD/LOQ (mg/g)	ANALYTE	AMT (mg/g)	AMT (%)	LIMIT (%)	LOD/LOQ (mg/g)
CBC	ND	ND		0.300/1.000	CBNA	ND	ND		0.300/1.000
CBCA	1.190	0.1190		0.300/1.000	Δ <sup>8</sup> -THC	ND	ND		0.300/1.000
CBD	ND	ND		0.300/1.000	Δ <sup>8</sup> -THCA	ND	ND		0.300/1.000
CBDA	< LOQ	< LOQ	0.300/1.000	N/A	Δ <sup>9</sup> -THC	4.462	0.4462		0.300/1.000
CBDV	ND	ND		0.300/1.000	Δ <sup>9</sup> -THCA	202.391	20.2391		0.300/1.000
CBDVA	ND	ND		0.300/1.000	THCV	ND	ND		0.300/1.000
CBG	< LOQ	< LOQ	0.300/1.000	N/A	THCVA	1.316	0.1316		0.300/1.000
CBGA	13.514	1.3514		0.300/1.000	TOTAL THC**	181.959	18.1959	PASS	30.5 %
CBL	1.040	0.1040		0.300/1.000	TOTAL CBD**	< LOQ	< LOQ	N/A	
CBN	ND	ND		0.300/1.000					

\*\* TOTAL THC = (Δ<sup>9</sup>-THCA X 0.877) + Δ<sup>9</sup>-THC

\*\* TOTAL CBD = (CBDA X 0.877) + CBD

DRY-WEIGHT AMOUNTS SHOWN



L-011: TERPENES BY GC-MS | DEC 23, 2024

TESTED

ANALYTE	AMT (mg/g)	AMT (%)	LIMIT	LOD/LOQ (mg/g)	ANALYTE	AMT (mg/g)	AMT (%)	LIMIT	LOD/LOQ (mg/g)
TOTAL TERPENES	12.82	1.282			CAMPHENE	0.09	0.009		0.015/0.048
(+)-CEDROL	ND	ND		0.015/0.048	CAMPHOR	ND	ND		0.044/0.144
(+)-FENCHOL	0.30	0.030		0.015/0.048	CIS-β-OCIMENE	0.04	0.004		0.010/0.032
(+)-PULEGONE	ND	ND		0.015/0.048	CIS-NEROLIDOL	ND	ND		0.015/0.048
(-)-α-BISABOOL	0.50	0.050		0.015/0.048	D-LIMONENE	3.17	0.317		0.015/0.048
(-)-CARYOPHYLLENE OXIDE	0.23	0.023		0.015/0.048	Δ <sup>3</sup> -CARENE	ND	ND		0.015/0.048
(-)-GUAJOL	1.01	0.101		0.015/0.048	EUCALYPTOL	ND	ND		0.015/0.048
(-)-ISOPULEGOL	ND	ND		0.015/0.048	FENCHONE	< LOQ	< LOQ	0.029/0.096	N/A
α-CEDRENE	ND	ND		0.015/0.048	γ-TERPINENE	ND	ND		0.015/0.048
α-HUMULENE	0.46	0.046		0.015/0.048	γ-TERPINEOL	ND	ND		0.003/0.010
α-PHELLANDRENE	ND	ND		0.015/0.048	GERANIOL	ND	ND		0.015/0.048
α-PINENE	0.35	0.035		0.015/0.048	GERANYL ACETATE	ND	ND		0.015/0.048
α-TERPINENE	ND	ND		0.015/0.048	ISOBORNEOL	ND	ND		0.015/0.048
α-TERPINEOL	0.27	0.027		0.009/0.031	LINALOOL	1.41	0.141		0.015/0.048
α-TERPINOLENE	0.05	0.005		0.015/0.048	NEROL	ND	ND		0.015/0.048
β-CARYOPHYLLENE	1.62	0.162		0.015/0.048	SABINENE	ND	ND		0.015/0.048
β-MYRCENE	2.78	0.278		0.015/0.048	TRANS-β-OCIMENE	0.02	0.002		0.005/0.016
β-PINENE	0.41	0.041		0.015/0.048	TRANS-NEROLIDOL	ND	ND		0.015/0.048
BORNEOL	0.11	0.011		0.029/0.096	VALENCENE	ND	ND		0.015/0.048



L-017: WATER ACTIVITY BY AW PROBE | DEC 19, 2024

PASS

ANALYTE	AMT (Aw)	LIMIT (Aw)	PASS/FAIL
WATER ACTIVITY	0.549	0.65 Aw	PASS

RESULTS CERTIFIED BY: CHASE TRETBAR

LAB DIRECTOR, AARDWOLF-CERTUS LABS

JAN 03, 2025

*Chase Tretbar*



All analytical procedures and laboratory quality control (LQC) samples required by the Mississippi Department of Health's (MSDH) regulations for cannabis testing facilities were performed and met the acceptance criteria. Notwithstanding this compliance, this information is provided as a service for informational purposes only, and Aardwolf-Certus makes no claims of efficacy or safety of this product. The results provided are applicable only for the sample(s) analyzed in the condition received; and only for compliance with the Mississippi Medical Cannabis Act Miss. Code Ann §41-137-1, et seq.. Measurement uncertainty is available on request. This report should only be reproduced in full. The statements and results provided in this report have not been approved or endorsed by the Food and Drug Administration (FDA). These statements have not been evaluated by the FDA. This product is not intended to diagnose, treat, cure, or prevent any disease.



L-013: HEAVY METALS BY ICP-MS | DEC 31, 2024

**PASS**

ANALYTE	AMT (µg/g)	LIMIT (µg/g)	LOD/LOQ (µg/g)	PASS/FAIL	ANALYTE	AMT (µg/g)	LIMIT (µg/g)	LOD/LOQ (µg/g)	PASS/FAIL
ARSENIC	ND	0.4 µg/g	0.019/0.063	PASS	LEAD	< LOQ	1 µg/g	0.019/0.063	PASS
CADMIUM	ND	0.4 µg/g	0.019/0.063	PASS	MERCURY	ND	0.2 µg/g	0.019/0.063	PASS
CHROMIUM	0.486	1.2 µg/g	0.076/0.250	PASS	NICKEL	0.289	1 µg/g	0.076/0.250	PASS
COPPER	11.394		0.152/0.500	N/A					

RESULTS CERTIFIED BY: CHASE TRETBAR

LAB DIRECTOR, AARDWOLF-CERTUS LABS

JAN 03, 2025



All analytical procedures and laboratory quality control (LQC) samples required by the Mississippi Department of Health's (MSDH) regulations for cannabis testing facilities were performed and met the acceptance criteria. Notwithstanding this compliance, this information is provided as a service for informational purposes only, and Aardwolf-Certus makes no claims of efficacy or safety of this product. The results provided are applicable only for the sample(s) analyzed in the condition received; and only for compliance with the Mississippi Medical Cannabis Act Miss. Code Ann §41-137-1, et seq.. Measurement uncertainty is available on request. This report should only be reproduced in full. The statements and results provided in this report have not been approved or endorsed by the Food and Drug Administration (FDA). These statements have not been evaluated by the FDA. This product is not intended to diagnose, treat, cure, or prevent any disease.



L-015: PESTICIDES BY LC-MS/MS | DEC 31, 2024

**PASS**

ANALYTE	AMT (µg/g)	LIMIT (µg/g)	LOD/LOQ (µg/g)	PASS/FAIL	ANALYTE	AMT (µg/g)	LIMIT (µg/g)	LOD/LOQ (µg/g)	PASS/FAIL
ABAMECTIN*	ND	0.5 µg/g	0.038/0.125	PASS	KRESOXIM-METHYL	ND	0.4 µg/g	0.038/0.125	PASS
ACEPHATE	ND	0.4 µg/g	0.038/0.125	PASS	MALATHION	ND	0.2 µg/g	0.038/0.125	PASS
ACEQUINOCYL	ND	2 µg/g	0.038/0.125	PASS	METALAXYL	ND	0.2 µg/g	0.038/0.125	PASS
ACETAMIPRID	ND	0.2 µg/g	0.038/0.125	PASS	METHIOCARB	ND	0.2 µg/g	0.038/0.125	PASS
ALDICARB	ND	0.4 µg/g	0.038/0.125	PASS	METHOMYL	ND	0.4 µg/g	0.038/0.125	PASS
AZOXYSTROBIN	ND	0.2 µg/g	0.038/0.125	PASS	METHYL PARATHION	ND	0.2 µg/g	0.038/0.125	PASS
BIFENAZATE	ND	0.2 µg/g	0.038/0.125	PASS	MYCLOBUTANIL	ND	0.2 µg/g	0.038/0.125	PASS
BIFENTHRIN	ND	0.2 µg/g	0.038/0.125	PASS	NALED	ND	0.5 µg/g	0.038/0.125	PASS
BOSCALID	ND	0.4 µg/g	0.038/0.125	PASS	OXAMYL	ND	1 µg/g	0.038/0.125	PASS
CARBARYL	ND	0.2 µg/g	0.038/0.125	PASS	PACLOBUTRAZOL	ND	0.4 µg/g	0.038/0.125	PASS
CARBOFURAN	ND	0.2 µg/g	0.038/0.125	PASS	PERMETHRIN*	ND	0.2 µg/g	0.038/0.125	PASS
CHLORANTRANIL-IPROLE	ND	0.2 µg/g	0.038/0.125	PASS	PHOSMET	ND	0.2 µg/g	0.038/0.125	PASS
CHLORFENAPYR	ND	1 µg/g	0.038/0.125	PASS	PIPERONYLBUTOXIDE	ND	2 µg/g	0.038/0.125	PASS
CHLORMEQUAT CHLORIDE	ND	0.2 µg/g	0.038/0.125	PASS	PRALLETHRIN	ND	0.2 µg/g	0.038/0.125	PASS
CHLORPYRIFOS	ND	0.2 µg/g	0.038/0.125	PASS	PROPICONAZOLE	ND	0.4 µg/g	0.038/0.125	PASS
CLOFENTEZINE	ND	0.2 µg/g	0.038/0.125	PASS	PROPOXUR	ND	0.2 µg/g	0.038/0.125	PASS
CYFLUTHRIN	ND	1 µg/g	0.038/0.125	PASS	PYRETHRINS	ND	1 µg/g		PASS
CYPERMETHRIN	ND	1 µg/g	0.038/0.125	PASS	PYRETHRINS CINERIN I	ND		0.001/0.004	N/A
DAMINOZIDE	ND	1 µg/g	0.019/0.063	PASS	PYRETHRINS JASMOLIN I	ND		0.001/0.004	N/A
DIAZINON	ND	0.2 µg/g	0.038/0.125	PASS	PYRETHRINS PYRETHRIN I	ND		0.021/0.069	N/A
DICHLORVOS	ND	0.1 µg/g	0.038/0.125	PASS	PYRIDABEN	ND	0.2 µg/g	0.038/0.125	PASS
DIMETHOATE	ND	0.2 µg/g	0.038/0.125	PASS	SPINOSAD	ND	0.2 µg/g		PASS
ETHOPROPHOS	ND	0.2 µg/g	0.038/0.125	PASS	SPINOSYN A	ND		0.029/0.095	N/A
ETOFENPROX	ND	0.4 µg/g	0.038/0.125	PASS	SPINOSYN D	ND		0.009/0.030	N/A
ETOXAZOLE	ND	0.2 µg/g	0.038/0.125	PASS	SPIROMESIFEN	ND	0.2 µg/g	0.038/0.125	PASS
FENOXYCARB	ND	0.2 µg/g	0.038/0.125	PASS	SPIROTETRAMAT	ND	0.2 µg/g	0.038/0.125	PASS
FENPYROXIMATE	ND	0.4 µg/g	0.038/0.125	PASS	SPIROXAMINE	ND	0.4 µg/g		PASS
FIPRONIL	ND	0.4 µg/g	0.038/0.125	PASS	SPIROXAMINE A*	ND		0.015/0.049	N/A
FLONICAMID	ND	1 µg/g	0.038/0.125	PASS	SPIROXAMINE B*	ND		0.024/0.078	N/A
FLUDIOXONIL	ND	0.4 µg/g	0.038/0.125	PASS	TEBUCONAZOLE	ND	0.4 µg/g	0.038/0.125	PASS
HEXYTHIAZOX	ND	1 µg/g	0.038/0.125	PASS	THIACLOPRID	ND	0.2 µg/g	0.038/0.125	PASS
IMAZALIL	ND	0.2 µg/g	0.038/0.125	PASS	THIAMETHOXAM	ND	0.2 µg/g	0.038/0.125	PASS
IMIDACLOPRID	ND	0.4 µg/g	0.038/0.125	PASS	TRIFLOXYSTROBIN	ND	0.2 µg/g	0.038/0.125	PASS

\* BEYOND SCOPE OF ACCREDITATION

RESULTS CERTIFIED BY: CHASE TRETBAR  
 LAB DIRECTOR, AARDWOLF-CERTUS LABS  
 JAN 03, 2025



All analytical procedures and laboratory quality control (LQC) samples required by the Mississippi Department of Health's (MSDH) regulations for cannabis testing facilities were performed and met the acceptance criteria. Notwithstanding this compliance, this information is provided as a service for informational purposes only, and Aardwolf-Certus makes no claims of efficacy or safety of this product. The results provided are applicable only for the sample(s) analyzed in the condition received; and only for compliance with the Mississippi Medical Cannabis Act Miss. Code Ann §41-137-1, et seq.. Measurement uncertainty is available on request. This report should only be reproduced in full. The statements and results provided in this report have not been approved or endorsed by the Food and Drug Administration (FDA). These statements have not been evaluated by the FDA. This product is not intended to diagnose, treat, cure, or prevent any disease.



L-015: MYCOTOXINS BY LC-MS/MS | DEC 31, 2024

PASS

ANALYTE	AMT (µg/kg)	LIMIT (µg/kg)	LOD/LOQ (µg/kg)	PASS/FAIL	ANALYTE	AMT (µg/kg)	LIMIT (µg/kg)	LOD/LOQ (µg/kg)	PASS/FAIL
<b>AFLATOXINS*</b>	ND	20 µg/kg		<b>PASS</b>	<i>AFLATOXIN G1</i>	ND		1.515/5.000	N/A
<i>AFLATOXIN B1</i>	ND		1.515/5.000	N/A	<i>AFLATOXIN G2</i>	ND		1.515/5.000	N/A
<i>AFLATOXIN B2</i>	ND		1.515/5.000	N/A	<b>OCHRATOXIN A</b>	ND	20 µg/kg	3.030/10.000	<b>PASS</b>

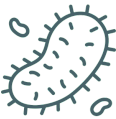
\* BEYOND SCOPE OF ACCREDITATION



L-010: TOTAL COLIFORMS BY 3M PETRIFILM | DEC 20, 2024

PASS

ANALYTE	AMT (CFU/g)	LIMIT (CFU/g)	PASS/FAIL
<b>COLIFORMS</b>	ND	100 CFU/g	<b>PASS</b>

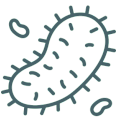


ASP/SAL/STEC BY QPCR | DEC 20, 2024

PASS

ANALYTE	AMT (in one gram)	LIMIT	PASS/FAIL	ANALYTE	AMT (in one gram)	LIMIT	PASS/FAIL
<b>ASPERGILLUS FLAVUS</b>	ND	Any amt in 1 gram	<b>PASS</b>	<b>ASPERGILLUS TERREUS</b>	ND	Any amt in 1 gram	<b>PASS</b>
<b>ASPERGILLUS FUMIGATUS</b>	ND	Any amt in 1 gram	<b>PASS</b>	<b>SALMONELLA SPP.*</b>	ND	Any amt in 1 gram	<b>PASS</b>
<b>ASPERGILLUS NIGER</b>	ND	Any amt in 1 gram	<b>PASS</b>	<b>SHIGA TOXIN-PRODUCING E. COLI</b>	ND	Any amt in 1 gram	<b>PASS</b>

\* BEYOND SCOPE OF ACCREDITATION



L-009: TOTAL YEAST & MOLD BY 3M PETRIFILM | DEC 23, 2024

PASS

ANALYTE	AMT (CFU/g)	LIMIT (CFU/g)	PASS/FAIL
<b>YEAST &amp; MOLD</b>	ND	10000 CFU/g	<b>PASS</b>



L-012: MOISTURE BY THERMOGRAVIMETRIC ANALYSIS | DEC 19, 2024

PASS

ANALYTE	AMT (%)	LIMIT (%)	PASS/FAIL
<b>MOISTURE</b>	9.700	15 %	<b>PASS</b>



L-016: FOREIGN MATERIAL ANALYSIS BY MICROSCOPY | DEC 19, 2024

PASS

ANALYTE	AMT (%)	LIMIT (%)	PASS/FAIL	ANALYTE	AMT (%)	LIMIT (%)	PASS/FAIL
<b>IMBEDDED FOREIGN MATERIAL*</b>	ND	25 %	<b>PASS</b>	<b>MOLD*</b>	ND	25 %	<b>PASS</b>
<b>INSECT FRAGMENTS, HAIR, MAMMAL EXCREMENT*</b>	ND	1 Unit/3g	<b>PASS</b>	<b>SAND, SOIL, CINDERS, DIRT*</b>	ND	25 %	<b>PASS</b>

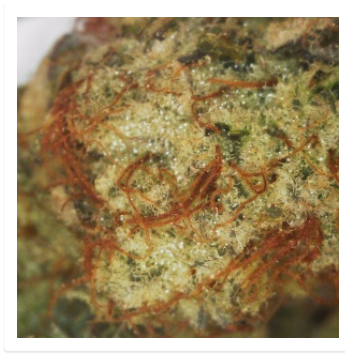
\* BEYOND SCOPE OF ACCREDITATION

RESULTS CERTIFIED BY: CHASE TRETBAR  
LAB DIRECTOR, AARDWOLF-CERTUS LABS  
JAN 03, 2025



All analytical procedures and laboratory quality control (LQC) samples required by the Mississippi Department of Health's (MSDH) regulations for cannabis testing facilities were performed and met the acceptance criteria. Notwithstanding this compliance, this information is provided as a service for informational purposes only, and Aardwolf-Certus makes no claims of efficacy or safety of this product. The results provided are applicable only for the sample(s) analyzed in the condition received; and only for compliance with the Mississippi Medical Cannabis Act Miss. Code Ann §41-137-1, et seq.. Measurement uncertainty is available on request. This report should only be reproduced in full. The statements and results provided in this report have not been approved or endorsed by the Food and Drug Administration (FDA). These statements have not been evaluated by the FDA. This product is not intended to diagnose, treat, cure, or prevent any disease.

PRODUCT IMAGES



RESULTS CERTIFIED BY: CHASE TRETBAR  
LAB DIRECTOR, AARDWOLF-CERTUS LABS  
JAN 03, 2025



All analytical procedures and laboratory quality control (LQC) samples required by the Mississippi Department of Health's (MSDH) regulations for cannabis testing facilities were performed and met the acceptance criteria. Notwithstanding this compliance, this information is provided as a service for informational purposes only, and Aardwolf-Certus makes no claims of efficacy or safety of this product. The results provided are applicable only for the sample(s) analyzed in the condition received; and only for compliance with the Mississippi Medical Cannabis Act Miss. Code Ann §41-137-1, et seq.. Measurement uncertainty is available on request. This report should only be reproduced in full. The statements and results provided in this report have not been approved or endorsed by the Food and Drug Administration (FDA). These statements have not been evaluated by the FDA. This product is not intended to diagnose, treat, cure, or prevent any disease.